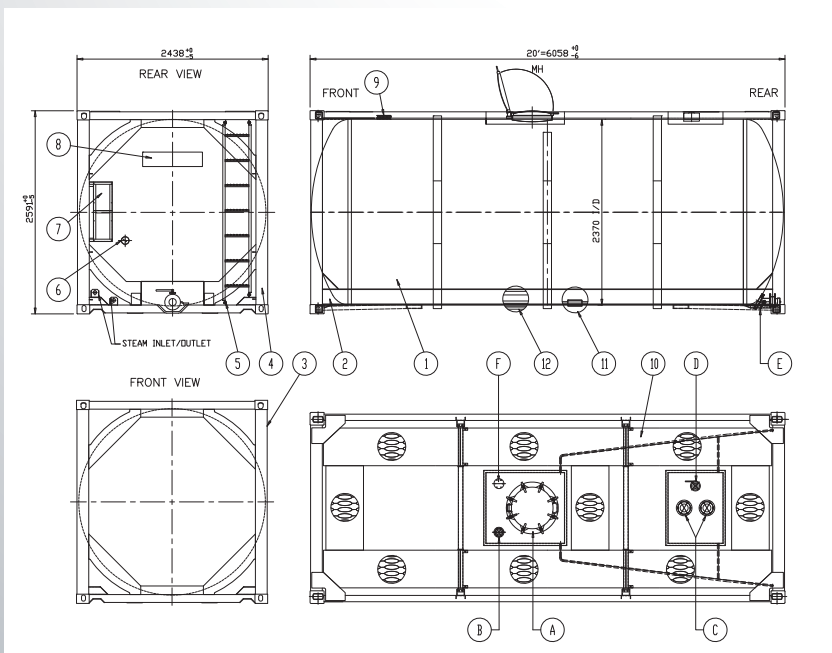




T11 20 FT ISO, 25000 AND 26000 LITRE TANK CONTAINERS

For the Transport and Storage of Liquid Products



- Large capacity
- Full frame design
- Low tare weight
- Insulated and fitted with heating coils
- Global availability
- European manufactured valves
- Chemical grade and food grade tanks (dedicated fleets)
- B Type walkways
- V-Shaped, 70% coverage baffles (26000 litre tanks)

T11 20 FT ISO, 25000 AND 26000 LITRE TANK CONTAINER

STANDARD SPECIFICATIONS*

CAPACITY	25000 litres / 6604 U.S. gallons 26000 litres / 6868 U.S. gallons	LADDER	Fitted to the end of the tank
T CODE	T11	TOP DISCHARGE	2 x DN 80 / 3 inch provision fitted
LENGTH	20 feet (6.058 meters)	BOTTOM DISCHARGE	3 closures; 80 mm / 3 inches - 45° foot valve + stainless steel butterfly valve + 3 inches BSP with cap
WIDTH	8 feet (2.438 meters)	FILLING PORT / SPARE CONNECTION	80 mm / 3 inches
HEIGHT	8 feet, 6 inches (2.591 meters)	MANWAY	500 mm / 20 inches diameter, swing bolt closures (8) with wing nuts
MAXIMUM GROSS	36000 kg (79366 lbs.)	AIR LINE	40 mm / 1.5 inch stainless steel ball valve with pressure gauge
TARE WEIGHT	25000L: 3670 kg (8090 lbs.) 26000L: 3730 kg (8223 lbs.)	SPILL BOXES	Two fitted with drain tubes
WORKING PRESSURE	4 bar/ 58 psi	SAFETY DEVICES	2.5 inch BSP pressure relief valve set at 4.4 bar / 64 psi. Fusible link fitted to bottom valve. Grounding connection.
TEST PRESSURE	6 bar/ 87 psi	INSULATION AND CLADDING	Rockwool in 50 mm thickness and GRP cladding
DESIGN TEMP	-40 C to 130 C (Loading temp up to 150C)	HEATING / COOLING	Coils with 12 m2 effective heating surface and 4 bar working pressure. BSP male threaded connections.
BARREL THICKNESS & CONSTRUCTION	4.4 mm equivalent reference steel, 316L stainless steel construction	WALKWAY	B Type, Marine grade aluminium & provision to fit handrails
DESIGN CODE	ASME VIII DIV.1 / EN14025 (where applicable)	THERMOMETER	Surface sensor gauge fitted, reading -40C/-40 F to 160C/320F
FRAME TYPE	Full	GASKETS	For manlid only : PTFE outer encapsulating EPDM inner Others: PTFE fitted. Can be changed to meet chemical or food grade requirements or customer specification.
		BAFFLES	V-Shaped (70% coverage) (26000 litre tanks only)

APPROVALS:

All global approvals for international transport as UN Portable tank including CSC, TC (Transport Canada), FRA, UK Dft, TIR, IMDG, RID/ ADR, US DOT/ CFR 49, UIC and other local approvals.

SPECIFICATION OPTIONS:

- Collapsible handrails
- Ground operated air-line
- Full walkways
- Siphon tube (top discharge)
- Various valve options
- GPS tracking and telemetry systems

* All specification details are based on the average T11 type, 25000 and 26000 litre capacity tank containers in the Raffles Lease fleet. Specifications may vary based on a selected tank container. For more specific details please contact your local Raffles Lease office. Our full office list can be found on our website at www.raffleslease.com

Raffles Lease utilizes the latest CAD technology for our tank containers. Our Technical and Maintenance & Repair Departments utilize this technology to design the optimal tank container configuration and manage modification projects that may require unique specifications to meet our client's requirements.



Raffles Lease Ltd.

Elbberg 6b, 22767 Hamburg GERMANY | Phone: +49 40 300684796 | raffleslease.com