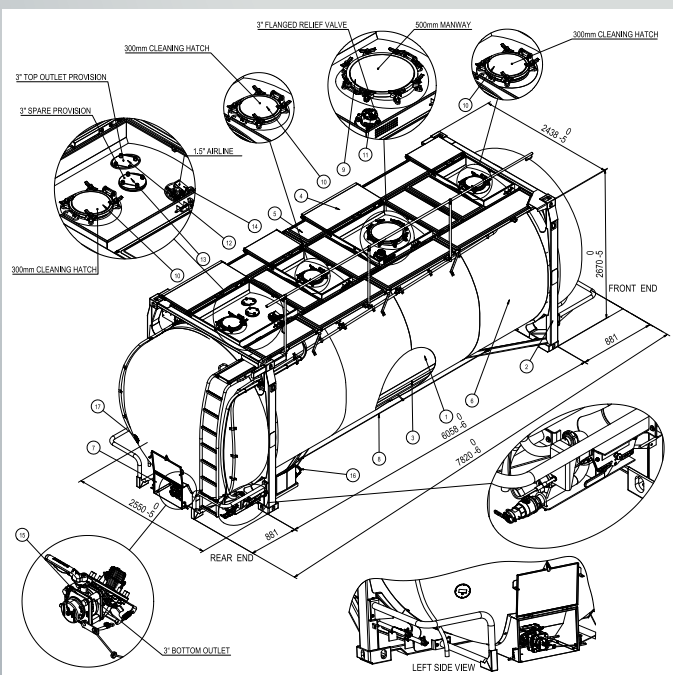




T11 TYPE, 35000 LITRE LIGHTWEIGHT SWAP BODY TYPE TANK CONTAINERS

For Transport and Storage of Liquid Products



- / Large capacity
- / V-shaped baffles (70% coverage) and cleaning hatches
- / Low tare weight
- / Insulated and fitted with heating coils
- / European manufactured valves
- / Ground level operated airline/vapor return
- / Full coverage walkways and collapsible handrail

T11 TYPE, 35000 LITRE LIGHTWEIGHT SWAP BODY TYPE TANK CONTAINERS

STANDARD SPECIFICATIONS*

Capacity	35000 litres / 9246 U.S. gallons	Ladder	Fitted to the end of the tank
T Code	T11	Bottom Discharge	1 x 80 mm / 3 inch / 45° foot valve, stainless steel butterfly valve / 3 inch BSP with cap. 3 closures in total.
Length	7820 mm	Filling port / Spare Connection	1 x 80 mm / 3 inch provision fitted with blank flange
Width	2550 mm	Manway	1 x 500 mm / 20 inch diameter, swing bolt closures (8)
Height	2670 mm	Cleaning Hatches	3 x 300 mm / 11.8 inch diameter, swing bolt closures (4)
Maximum Gross Weight	39000 kg	Air Line/Vapor Return	1 x 40 mm / 1.5 inch stainless steel ball valve with pressure gauge. Remote control and connection at ground level at rear of tank.
Tare Weight	4440 kg	Spill Boxes	Four (4) fitted with drain tubes
Working Pressure	4 bar/ 58 psi	Safety Devices	1 x 80 mm/ 3 inch BSP pressure relief valve set at 4.4 bar / 64 psi. Remote closure cable fitted. Grounding connection.
Test Pressure	6 bar/ 87 psi	Insulation & Cladding	Rockwool in 50 mm thickness with aluminum foil, where possible and GRP cladding
Design Temp	-40 C to 130 C	Heating/Cooling	Coils with 10 longitudinal runs, 12.6 m ² effective heating surface and 6 bar working pressure. BSP male threaded connections.
Barrel thickness and construction	4.4 mm equivalent reference steel, 316L stainless steel construction	Walkway	Full coverage, Marine grade aluminium & collapsible handrail
Baffles	4 x 316L Stainless steel, 70% fully welded vertical V-shaped corrugated baffles fitted.	Thermometer	Digital thermometer fitted to end of tank
Design Code	ASME sect. VIII, div. 1/ EN 14025, where applicable.	Gaskets	PTFE outer encapsulating EPDM inner. Can be changed to meet chemical or food grade requirements or customer specification.
Frame Type	Beam	Document Holder	Fitted to frame

Approvals and Design Codes: Approvals for international transport as UN Portable tank including (T11 IMDG, RID/ ADR-L4BN), CSC UIC, TIR and other local approvals.

Specification Options:

Siphon tube (Top discharge), GPS tracking and telemetry systems, Clean flow valves, etc.

*All specification details are based on the average T11 type, 35000 litre capacity swap body tank containers in the Raffles Lease fleet. Specifications may vary based on a selected tank container. For more specific details please contact your local Raffles Lease office. Our full office list can be found on our website at www.raffleslease.com

Raffles Lease utilizes the latest CAD technology for our tank containers. Our Technical and Maintenance & Repair Departments utilize this technology to design the optimal tank container configuration and manage modification projects that may require unique specifications to meet our client's requirements.



Raffles Lease PTE Ltd.

Head Office | 79 Anson Road, #11-04, Singapore 079906 | Phone: +65 6513 5785 | www.raffleslease.com